



Info-Work

Lower Brewers Swing Bridge Closed Until Further Notice *Rideau Canal National Historic Site*

August 13, 2021 – Parks Canada advises that the Lower Brewers Swing Bridge is closed to vehicles and pedestrians until further notice.

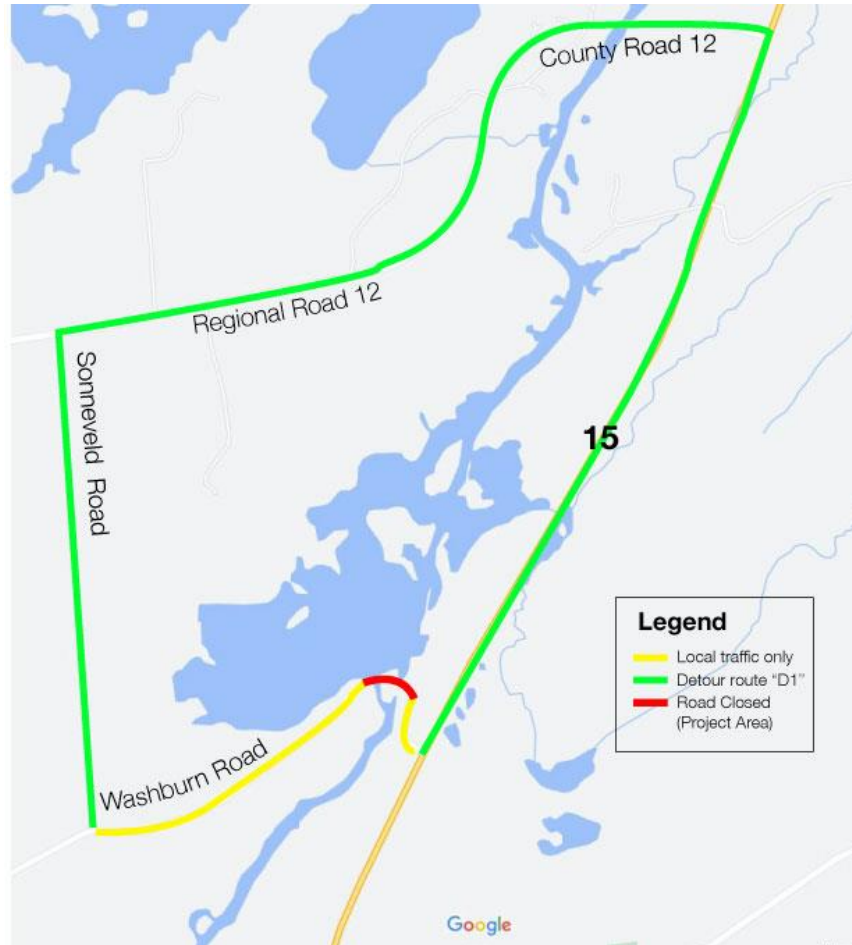
In order to ensure the safety of residents and visitors, and as part of Parks Canada's maintenance operations, all Rideau Canal bridges are inspected every year, with a comprehensive inspection taking place every five years. Further assessments on the condition of the bridge indicated that the bridge must be closed immediately for public safety until a replacement of the bridge can occur. Design work for the Lower Brewers Swing Bridge is currently underway and the bridge has been designated for replacement beginning in late 2021.

What to expect:

- During this closure, the bridge will remain in the open position. Temporary bridge closure signs are in place. Please exercise caution and follow signage in the area.
- Detour signs for vehicles have been installed and are detailed in the map below. The detour routes are as follows:
 - **For access to Washburn Road (East of the Bridge)**
 - Washburn Road East of the bridge to Highway 15 remains open to local traffic only. Traffic from Washburn Road (West of the bridge), Sonneveld Road and Sunbury Road are directed to use Detour D-1 (Regional Road 12 – Sunbury Road East - Highway 15 South)
 - **For access to Washburn Road (West of the Bridge)**
 - Washburn Road East of Sonneveld Road and West of the Bridge remains open to local traffic only. Traffic from Highway 15 are directed to use Detour D-1 (Regional Road 12 – Sunbury Road West)
- Boat navigation will not be impacted.



Info-Work



The future replacement of the Lower Brewers Swing Bridge is part of the Government of Canada's Federal Infrastructure Investment program. Parks Canada is leading this important infrastructure work to ensure safe, high-quality experiences for visitors by improving heritage, visitor, waterway, and highway assets located within national historic sites, national parks, and national marine conservation areas, including along the Rideau Canal National Historic Site.

For more information:

Carly Wallace
Public Relations and Communications Officer
Ontario Waterways, Parks Canada
carly.wallace@canada.ca
249-387-0519